



FACULTY ORIENTATION

JANUARY 2025

**MONTGOMERY COUNTY
PUBLIC SCHOOLS**

MC
MONTGOMERY COLLEGE


The Universities
AT SHADY GROVE



BRIEF HISTORY

Established in 2013 at 10 high schools in Montgomery County, ACES is a collaborative partnership between **Montgomery County Public Schools, Montgomery College** and the **Universities at Shady Grove (USG)** to provide individualized support and interventions that **increase college enrollment and completion**, specifically targeting student groups that are **underrepresented** in higher education.

**MONTGOMERY COUNTY
PUBLIC SCHOOLS**

MC
MONTGOMERY COLLEGE


The Universities
AT SHADY GROVE



14

HIGH SCHOOLS

3

CAMPUSES

9

INSTITUTIONS

PROGRAM HIGHLIGHTS

**NO GPA
REQUIREMENT**



**ONE-ON-ONE
STUDENT SUPPORT**



**SERIES OF
SUMMER PROGRAMS**



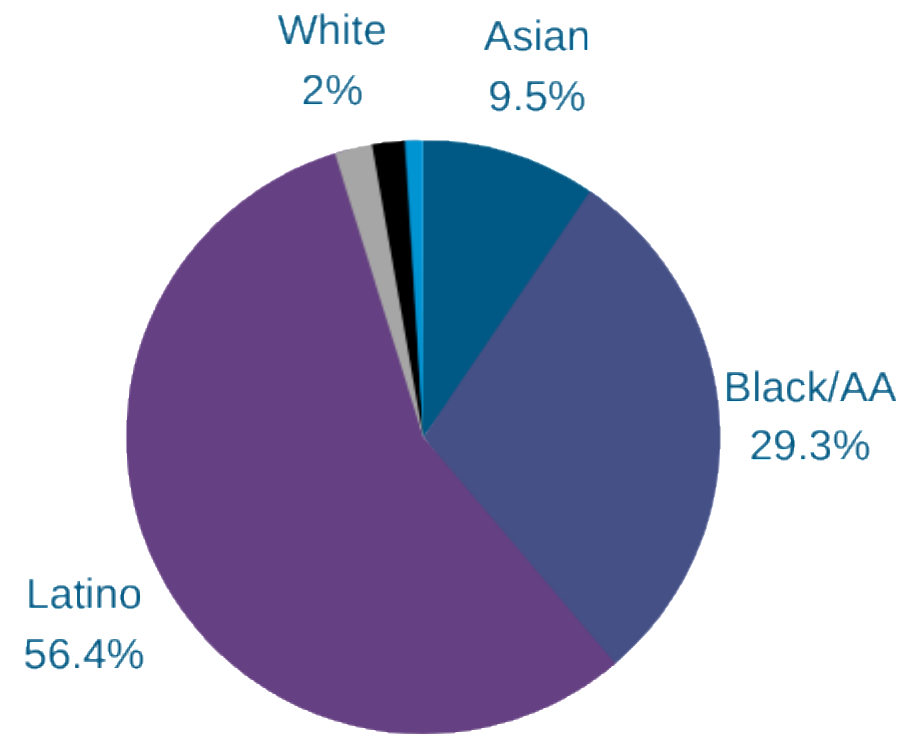
**RECRUITMENT IN
10TH GRADE**



PROGRAM BY THE NUMBERS

2653

CURRENTLY ENROLLED ACROSS THE ACES PATHWAY



STUDENT PARTICIPANTS BY RACE

1ST GEN TO COLLEGE

84%

SINGLE PARENT HOUSEHOLD

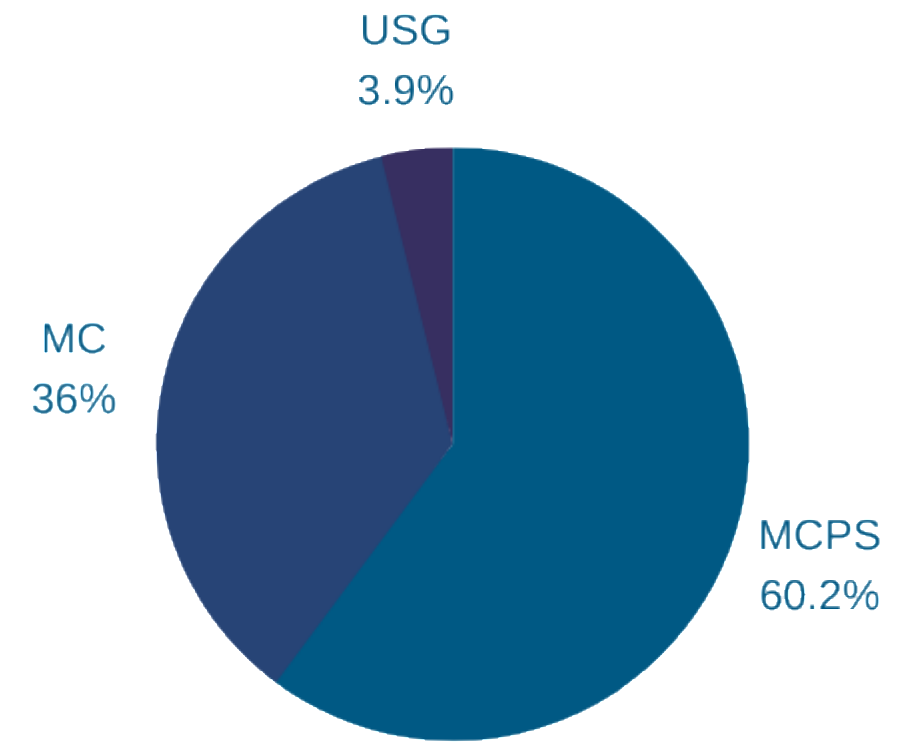
26%

LOW-INCOME

80%

EMERGENT MULTI-LINGUAL LEARNERS

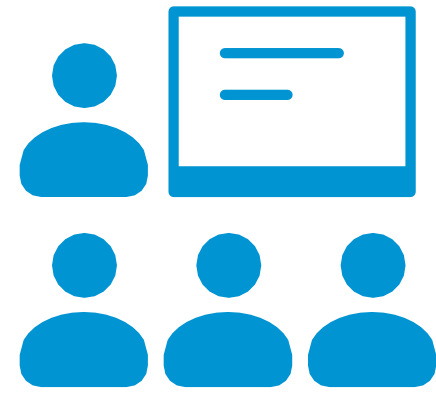
15%



PATHWAY PERCENTAGES

*This slide is a collection of ACES Data (data is self reported by students)

OUR IMPACT



92%

of credits attempted are completed by ACES students at MC

ANNUAL RETENTION RATES



90% **98%**

for MC
ACESStudents

for USG
ACESStudents

99%

ACES HS Graduation rate compared to 89% MCPS wide

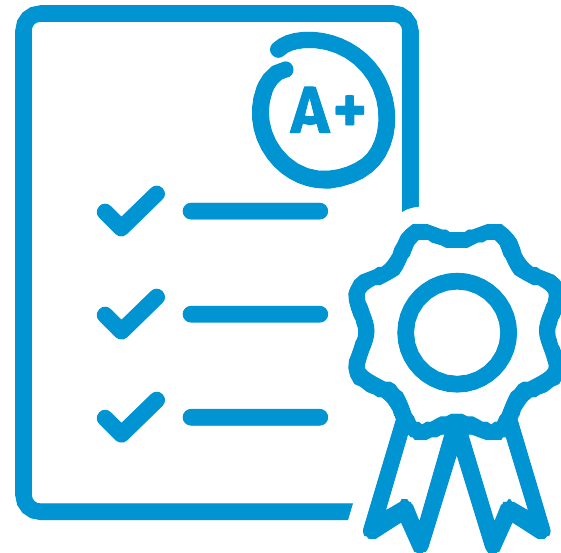


31%

ACES students who receive FARMS earned an associate's or bachelor's degree within four years (compared to a matched group 18.6%)

3.4

average GPA of
ACES students at
USG



ADMINISTRATIVE TEAM



**KAREN
CALLENDER-PRICE**
FOUNDING
DIRECTOR



ANDRES MALDONADO
(ASSOCIATE DIRECTOR
(CAMPUS OPS & PROG.)
CURRENTLY SERVING AS ACTING DIRECTOR



TERRE THOMAS
ASSOCIATE
DIRECTOR
(HS OPS & PROG.)



THERESA HOLTON
PROGRAM SUPPORT
COORDINATOR



DESARAI CABRERA
ADMINISTRATIVE
AIDE

HIGH SCHOOL COORDINATORS



MINJOTE MEKONEN
JAMES H. BLAKE
HIGH SCHOOL



DWAIN BROWN
MONTGOMERY BLAIR
HIGH SCHOOL



BLAIR BULLOCK
NORTHWOOD
HIGH SCHOOL



CARMEN SALAZAR
PAINT BRANCH
HIGH SCHOOL



VERNON SWANSON
SPRINGBROOK
HIGH SCHOOL



BELVEY RUSS
ALBERT EINSTEIN
HIGH SCHOOL



AMANI DADZIE
JOHN F. KENNEDY
HIGH SCHOOL



DANIELLE JORDAN
COL. ZADOK MAGRUDER
HIGH SCHOOL



BRITNEY WALKER
ROCKVILLE
HIGH SCHOOL



TRACI JOHNSON
WHEATON
HIGH SCHOOL



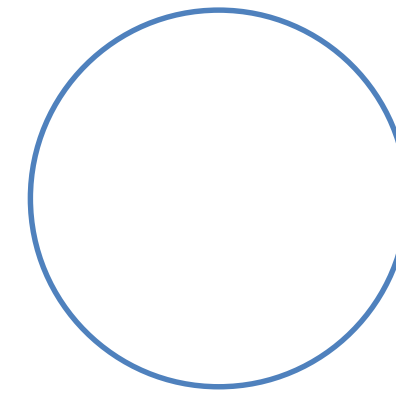
BRITTANY BECKWITH
CLARKSBURG
HIGH SCHOOL



PATRICIA POLIMADEI
SENECA VALLEY
HIGH SCHOOL



JENNIFER MOXLEY
WATKINS MILLS
HIGH SCHOOL



VACANT
GAITHERSBURG
HIGH SCHOOL

MC CAMPUS COORDINATORS



TIFFANY SHAW

TAKOMA PARK/SILVER SPRING
CAMPUS



KRISTINA LITTLE

TAKOMA PARK/SILVER SPRING
CAMPUS



MELISSA GUDIEL

ROCKVILLE CAMPUS
*CURRENTLY SERVING AS
ACTING ASSOCIATE DIRECTOR FOR
CAMPUS OPS. & PROG.*



SYLENA ELLISON

ROCKVILLE
CAMPUS



SHAWN CARR

GERMANTOWN
CAMPUS

ROLE OF ACES COORDINATOR

One-stop, individualized support model for student services and academic support. This includes, but is not limited to:



Navigating Academic and Test Prep Resources



Comprehensive College and Career Guidance



Leadership Development



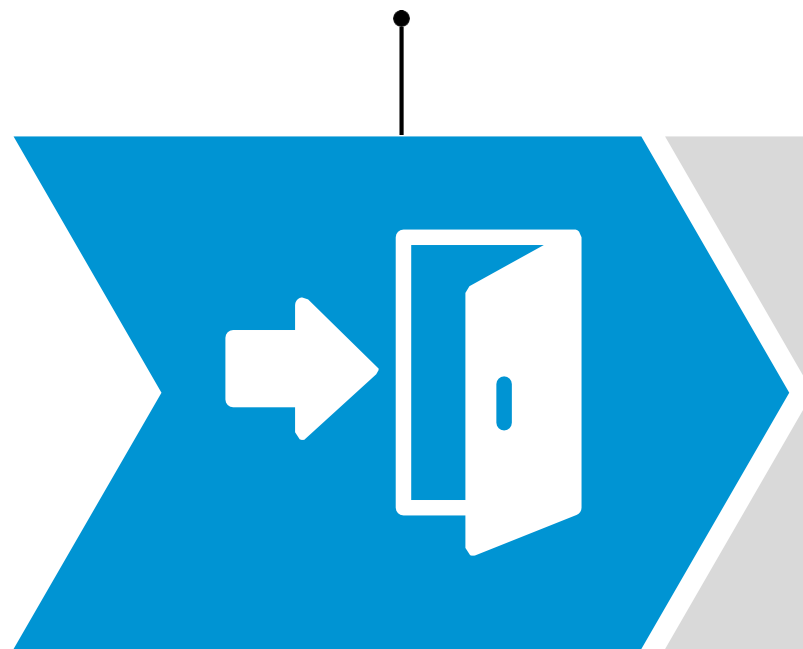
Financial Aid and Scholarship Guidance



Basic Needs Referral

ACES MC STUDENT PERSISTENCE PATH

0 Credits



Support students in HS to successfully onboard them at Montgomery College

- HS Visits (February)
- MC Field Trips (March - MC Spring Break)
- Make Your Move Summer Orientation (June)

1-45 Credits



Retain students and help them persist with guidance and access to resources

- Transfer Planning
- Career Workshops
- Scholarship Support
- Academic Interventions

46-60+ Credits



Support students through the transfer and graduation process at MC

- Transfer Application Support
- USG ACES Orientation

ACES BANNER CODING

ACES Program Hold (AC) - Hold automatically added to ACES HS seniors who apply to Montgomery College. To have the hold removed, students will need to complete an MC ACES Scholar Agreement and meet with their ACES Campus Coordinator one-on-one. Once this hold is removed, an ACES Cohort tag is added to the student's account under SGASADD.

AC	ACES Program		12/18/2023	12/31/2099	
<div style="display: flex; justify-content: space-between; align-items: center;"> ▼ STUDENT COHORT <input type="button" value="Insert"/> <input type="button" value="Delete"/> <input type="button" value="Copy"/> <input type="button" value="Filter"/> </div>					
From Term		202420	<input type="button" value="Maintenance"/>	To Term	999999
Cohort Code *	Description	Inactive	Reason		
ACES23	ACES Student 2023 grads	<input type="checkbox"/>			

ACES Transfer Planning Hold (AT) - Hold added to students who have completed 30+ credits to help us identify/assist with transfer plans. To have the hold removed, students will simply need to complete an ACES Transfer Planning Survey that will be sent to their Montgomery College email from our EMMA messaging account (The ACES Program <reply@mcemail.org>). This hold will be added/removed manually by our Program Coordinator.

AT	ACES Transfer Planning Hold		08/22/2023	12/31/2099
----	-----------------------------	--	------------	------------

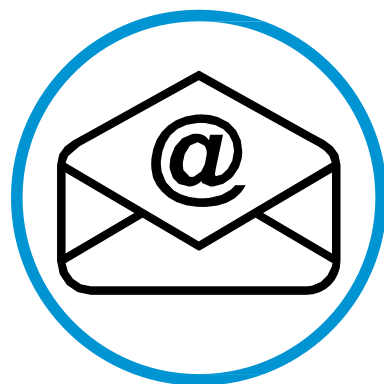
ACES Warning Hold (AW) – Hold added to students who become ineligible for ACES Scholarship opportunities or need to see an ACES Coordinator prior to course registration. The student must see an ACES Campus Coordinator to have this hold removed. This hold will be added/removed manually by our Program Coordinator or an ACES Coordinator.

AW	ACES Warning Hold		08/22/2023	12/31/2099
----	-------------------	--	------------	------------

CONTACT INFORMATION



240-567-2022



aces@montgomerycollege.edu



www.acesmontgomery.org