



COMMUNITY COLLEGES:
**Improving *the Lives*
of Entire Families**

Marriott Marquis **OCT**
26-29 New York City, NY

#ACCT2022

ACCT **2022**
LEADERSHIP
CONGRESS



Welcome to the Congress!

Creativity and Intentionality: Meeting the
Basic Needs of Students and Families
During COVID-19 and Beyond

Session Presenters:

- ***Gloria Aparicio Blackwell***, Montgomery College Board of Trustees
Former Chair
- ***Dr. Jermaine F. Williams***, Montgomery College President
- ***Dr. Melissa Gregory***, Montgomery College Associate Sr. Vice President
for Student Affairs
- ***Dr. Tonya Mason***, Montgomery College Dean of Student Success
and Rockville Student Affairs



Presentation focuses on Montgomery College's:

- Board of Trustee's role in advancing an institutional agenda to meet the basic needs of students and their families
- Innovative practices to identify and address basic needs of students and families
- Methods of determining financial need for student populations not typically served by traditional sources of assistance
- Best practices for coordinating with campus resources and community organizations to support students' basic needs.



About Montgomery College

Mission Statement

We empower our students to change their lives, and we enrich the life of our community. We are accountable for our results.

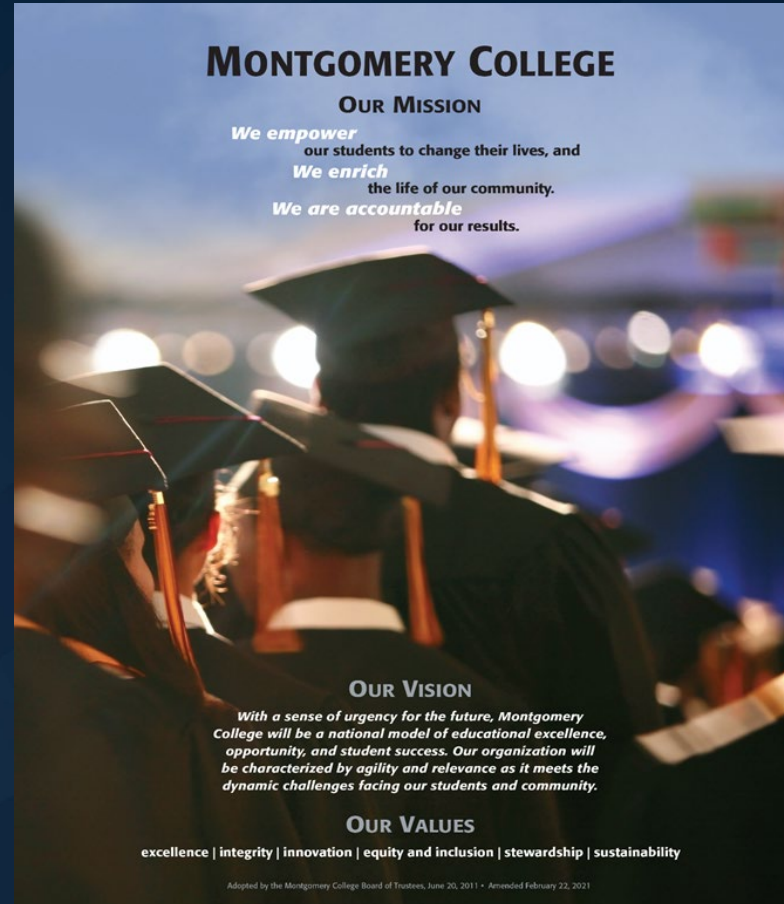
Vision Statement

With a sense of urgency for the future, Montgomery College will be a national model of educational excellence, opportunity, and student success. Our organization will be characterized by agility and relevance as it meets the dynamic challenges facing our students and community.

Core Values

Excellence, Integrity, Innovation, Equity and Inclusion, Stewardship, Sustainability

Adopted June 20, 2011 • Amended February 22, 2021



COMMUNITY COLLEGES:
Improving the Lives
of Entire Families

Montgomery College Board of Trustees



MONTGOMERY COLLEGE TRUSTEES AND PRESIDENTS

OUR TRUSTEES

Appointed by the Governor - 6-Year Renewable Term



Began as 7 Member Board

51 Trustees

25 Board Chairs | 36 Board Officers
39 Emeriti Trustees



Transitioned to 8 Member Board

44 Student Trustees



135 College Policies Created (8 Retired)

OUR PRESIDENTS

11 



8 Male
3 Female

6 White
4 African-American

5 Emeriti Presidents

Montgomery College President



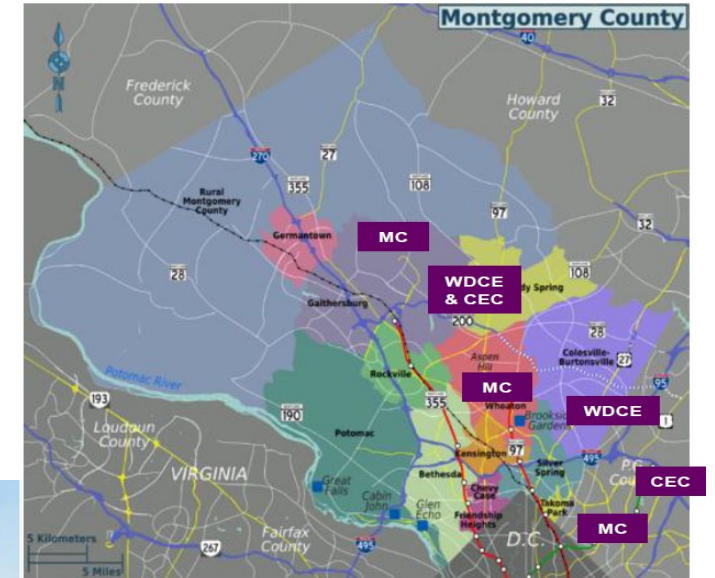
Dr. Jermaine F. Williams

11th Montgomery College President

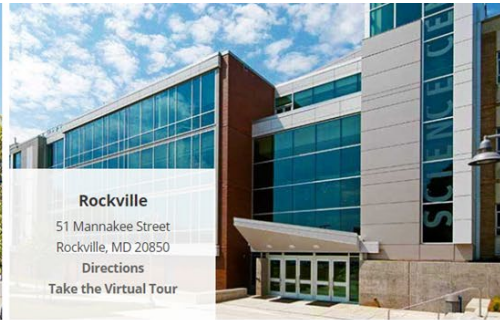
Appointed December 17, 2022

About Montgomery College

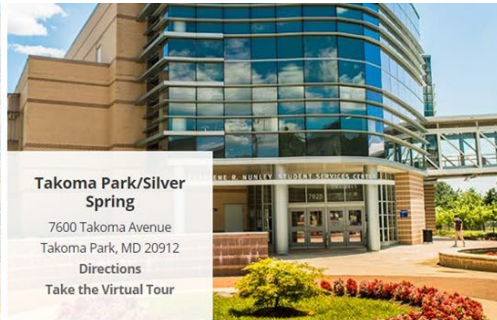
- Three campuses and two workforce development centers
- First community college with a hospital on a campus
- FY22 Budget: **\$312.6 Million**



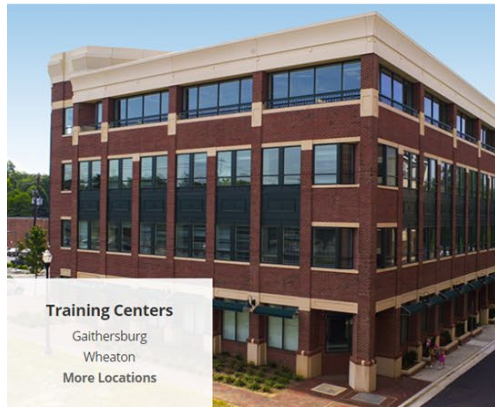
Germantown
20200 Observation Drive
Germantown, MD 20876
Directions
Take the Virtual Tour



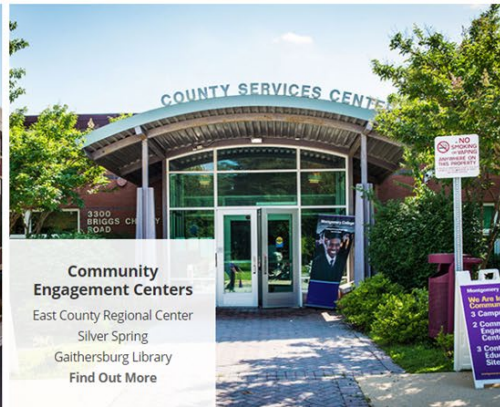
Rockville
51 Mannakee Street
Rockville, MD 20850
Directions
Take the Virtual Tour



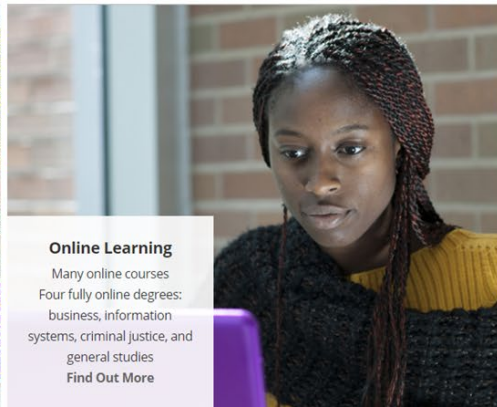
Takoma Park/Silver Spring
7600 Takoma Avenue
Takoma Park, MD 20912
Directions
Take the Virtual Tour



Training Centers
Gaithersburg
Wheaton
More Locations



Community Engagement Centers
East County Regional Center
Silver Spring
Gaithersburg Library
Find Out More



Online Learning
Many online courses
Four fully online degrees:
business, information systems, criminal justice, and general studies
Find Out More

MONTGOMERY COLLEGE BY THE NUMBERS

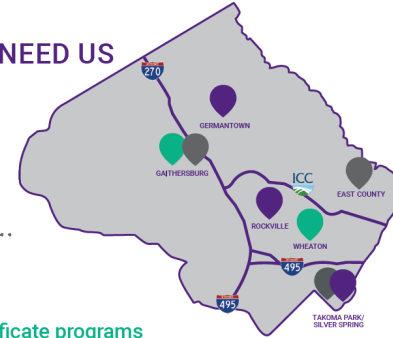
42,915

Credit and Noncredit
STUDENTS

Maryland's largest
community college

WE'RE WHERE YOU NEED US

- 3 – Campuses
- 2 – Training Sites
- 3 – Community Engagement Centers
- 📶 – Online



24%

MC students who
receive Pell grants
(federal financial aid)

\$27,238

Average household income for
federal Pell grant recipients

144

Degree and certificate programs

From mechanics to engineers and lab bench
workers to scientists: **we fuel the economy**

79%

Students of color

Student community
reflects today's
Montgomery County

\$5,322

annual tuition & fees

The most affordable
higher education option
for county residents

49%



Montgomery County Public
Schools graduates who stay
in state for college **attend MC**

9

Faculty members named
Maryland Professor of the Year
quality in classrooms

155

Countries represented*



48%

New full-time students who
graduate or transfer within
3 years of entering MC



MC students
who attend
part time*



24

Average
student age*

OUR MISSION

We empower students to change
their lives, and we enrich the
life of our community. We are
accountable for our results.

MC75
MONTGOMERY COLLEGE
1946 ■ 2021

Your community's college.

October 2021

*credit students

Pre-Pandemic Emergency Funds

- MC Foundation Emergency Funds
 - Paid tuition and fees
 - Direct payments for rent and other bills
 - Gift cards
 - \$41,200 in 2019
- Simple application with a College sponsor or advocate
 - [Student Emergency Funding Request | Montgomery College, Maryland](#)
- And then:
 - \$224,600 in 2020
 - \$293,000 in 2021



Higher Education Emergency Relief Fund (HEERF1)

- April 2020 – First notification of funding through the CARES Act
 - Direct emergency grants for students
 - Prioritize those with greatest need
 - May not be used to cover tuition and fees
 - Must be eligible for Title IV aid
 - \$5,497,875 student portion of CARES; \$1,536,410 Institutional CARES used for students
- Phased Distribution
 - Pell grant recipients automatic, then an application
 - Redesigned College systems to issue direct checks with no financial aid impact



Higher Education Emergency Relief Fund (HEERF2)

- February 2021 – Notification of funding through the CRRSA Act
 - Removed requirement for Title IV eligibility
 - Expanded to non-degree seeking, non-credit, dual enrollment, WDCE or exclusively enrolled in distance education
 - Prioritize those with greatest need
 - May use to cover tuition and fees with permission of student
 - \$5,497,875 student portion of CRRSAA
- Distribution
 - Application for all students; yes/no apply to College account
 - Needed a FAFSA to check citizenship



Higher Education Emergency Relief Fund (HEERF3)

- May 2021 – Notification of funding through the ARP Act
 - Now open to DACA, undocumented, and students studying under all visa types
 - May use to cover tuition and fees with permission of student
 - ARP eligibility changes opened to CARES and CRRSA retroactively
 - \$20,493,396 student portion of ARP; \$1.5 million institutional
- Distribution
 - Application for all students; yes/no apply to College account
- HEERF+ (Books/Tech; paid debts; additional student assistance)



Lessons Learned

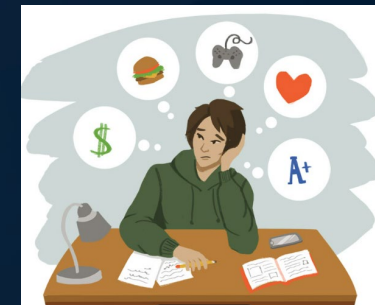
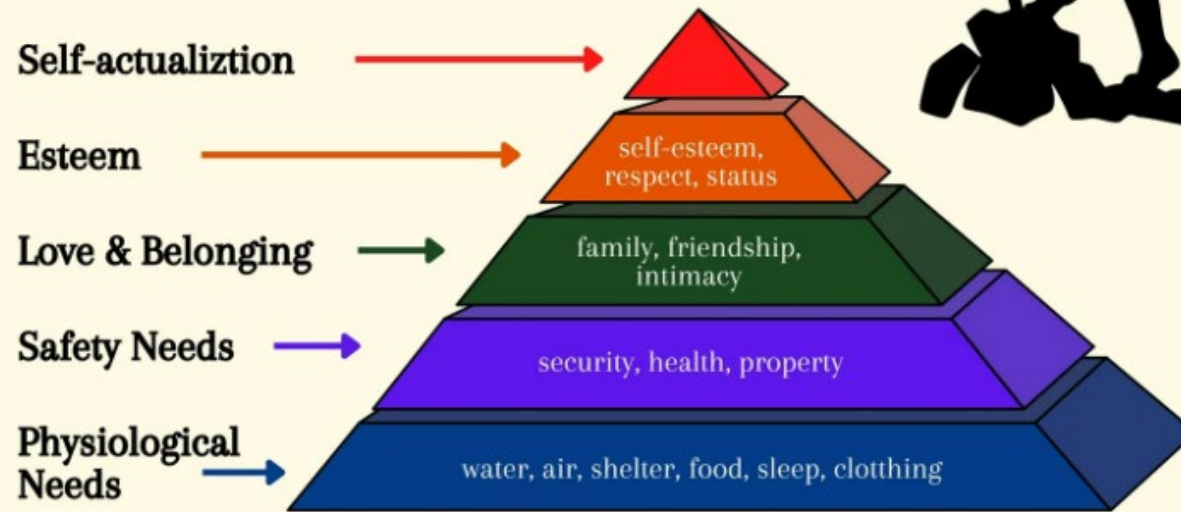
- Multiple communication methods
- Montgomery College enrolls over 3,000 non-citizen students annually – assessing extreme need was a challenge
- Many of our students are “unbanked” and need instruction on how to handle a check – students don’t cash their checks
- Personal outreach; phone calls, text, email
- No judgments!
- Now what?



Evolving Student Needs



HIERARCHY OF NEEDS



COMMUNITY COLLEGES:
**Improving the Lives
of Entire Families**



What Are Basic Needs?



Social Resource Program (SRP) Journey



- One PT staff person
- \$75,000 grant
- About 150 students served

- One PT staff person
- About 150 students served

- One FT SRP Coordinator
- Two PT SRP coaches
- About \$1 Million in funding from Dept. of Education
- Over 75 students served since the beginning of the fall semester



Dec.
2024

COMMUNITY COLLEGES:
*Improving the Lives
of Entire Families*





Opportunities

- How do we handle gaps and continuity in serving students?
- How do we secure permanent funding?
- What are the opportunities for partnerships with community resources?
- How do we encourage on-going advocacy and support from key stakeholders including the board and county, state, and federal levels?



Thank You!

Questions and Answers